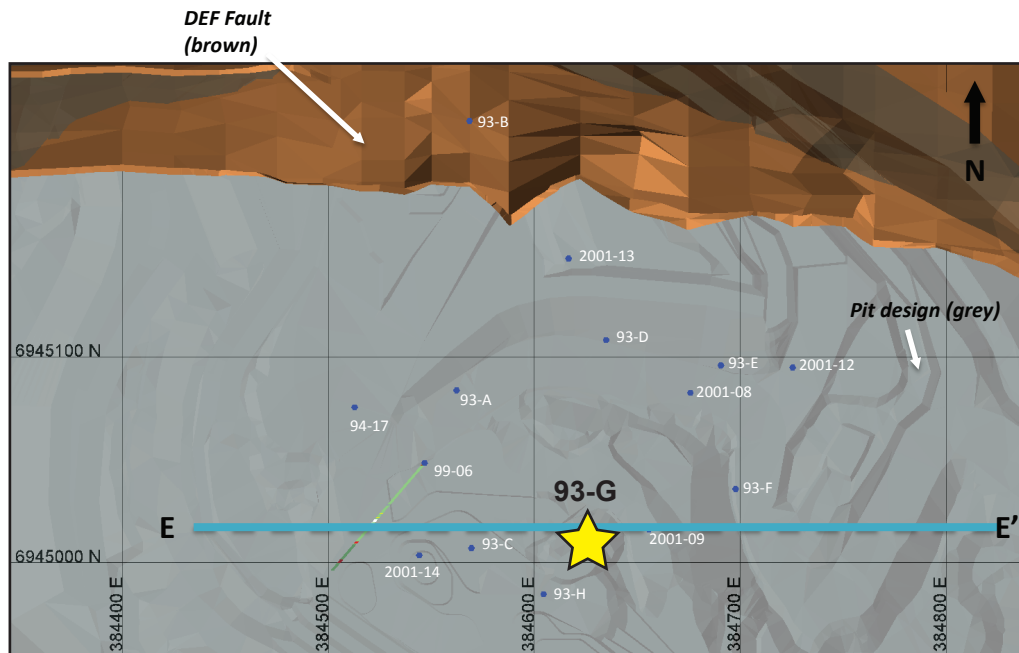


## Minto deposit (Yukon MINFILE 115I 021, 022)

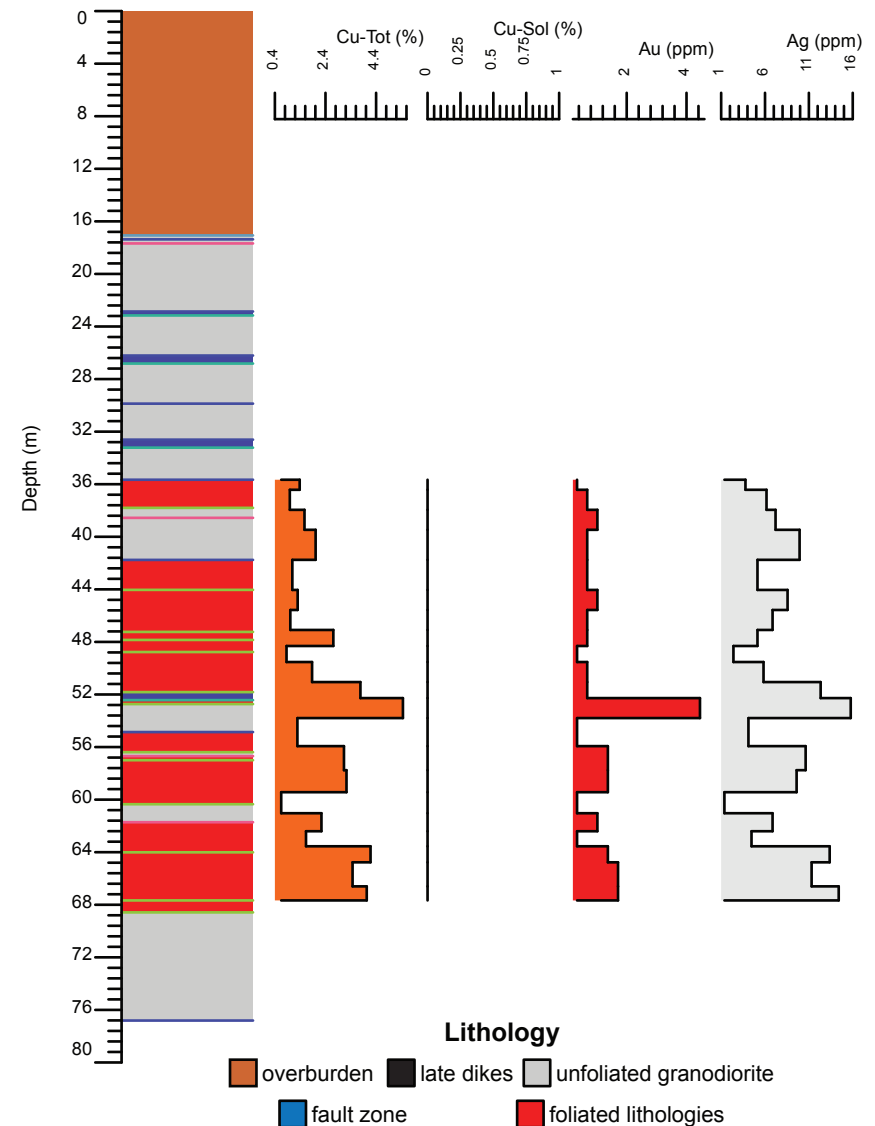
### Drill Hole: 93-G, Minto Main deposit

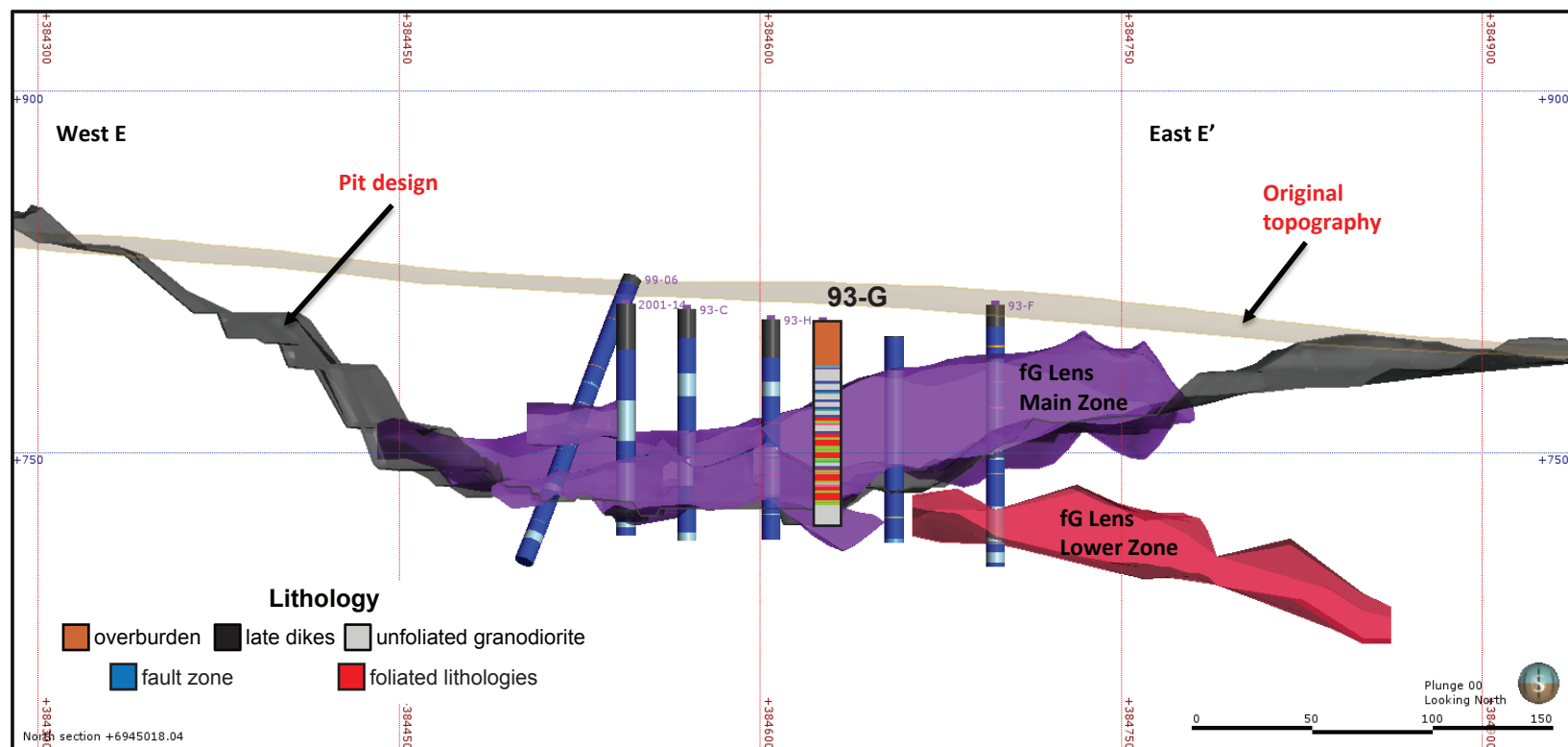
Area	Hole No.	Azimuth	Dip	Length (m)	Collar coordinates (NAD83, Zn 8)
Minto Main	93-G	0	-90	76.81	384625mE, 6945010mN



Above: Orthophoto of Minto area. Collar location of 93-G shown by yellow star, blue circles show collar locations of other drill holes in YGS collection.

Right: Simplified strip log with selected assays.





Above: Simplified vertical east-west cross-section through the Minto Main pit.

Right: Selected assays through Minto Main lower zone. Cu - Tot = sulphide and non-sulphide copper, Cu-Sol = non-sulphide copper

Hole	From (m)	To (m)	Interval (m)	Sample	Cu (%)	Cu-Sol (%)	Au (ppm)	Ag (ppm)
93-G	43.28	44.81	1.53	4576	1.1	0.0	0.7	5.1
93-G	44.81	46.33	1.52	4577	1.3	0.0	1.0	8.6
93-G	46.33	47.85	1.52	4578	1.0	0.0	0.7	6.9
93-G	47.85	48.77	0.92	4649	2.7	0.0	0.7	5.1
93-G	48.77	50.29	1.52	4650	0.9	0.0	0.3	2.4
93-G	50.29	51.82	1.53	2151	1.9	0.0	0.7	5.8
93-G	51.82	52.73	0.91	2152	3.8	0.0	0.7	12.3
93-G	52.73	54.86	2.13	2153	5.5	0.0	4.5	15.8
93-G	54.86	57	2.14	2154	1.3	0.0	0.3	4.1
93-G	57	58.52	1.52	2155	3.1	0.0	1.4	10.6
93-G	58.52	60.35	1.83	2156	3.2	0.0	1.4	9.6